

LANHAM EDI



EDI Your Way

EDI is a given in today's world. While implementing the many aspects of trading partner EDI requirements can seem daunting, the Lanham EDI solution provides a seamlessly simple way to meet trading partner specifications inside NAV.

Choose from several EDI implementation options, and mix and match as you like:

- Have Lanham, or your Lanham Partner, get you started in EDI with assistance for mapping, testing, and go-live.
- Use Lanham training to enable you to do your own mapping and control your own data.
- Or outsource your EDI completely to Lanham Services.

Lanham EDI: *Beyond Simple*

- Lanham EDI is natively inside your Microsoft® Dynamics™ NAV ERP solution for maximum visibility, efficiency, and seamlessly simple control.
- EDI documents are held in their normal NAV location (ex: invoices with invoices), as well as in Lanham EDI for those documents that do not have a location on the NAV side (ex: Inventory Advice, Sales Price Catalog & Order Status).
- Lanham EDI is job queue enabled; use it to schedule and automate the receiving and sending processes.
- 3PL EDI documents and shipments are easily handled.
- Licensing options – Lanham EDI can be used either on a SaaS (Software as a Service) monthly basis, or in an on-premise/perpetual license model.

Respond Quickly to Changing Requirements

Whether setting up a new trading partner or responding -to changes with an existing one, Lanham EDI gives you the tools to quickly and efficiently comply with your customer's or vendor's changing requirements.

Increased Customer Satisfaction

With superior visibility to real-time information, Lanham EDI provides you with the tools necessary to automate and streamline your business processes, enabling you to respond to customer demands on the fly and with accurate information.

Complex Document Support

Lanham EDI, designed specifically for NAV and serving Dynamics NAV customers for 20+ years, is the most experienced EDI solution for NAV. It supports a wide range of the most complex EDI documents. (Please feel free to check with us, regarding supported documents, as these documents change constantly with trading partner requirement updates.)

EDI Standards

Lanham EDI fully supports the X12, XML, automotive, UCS, and EDIFACT standards, as well as delimited files. In fact, multiple standards are often supported within a single transmission to, or from, a Value Added Network (VAN).

In addition to these standards, each industry has added its own specific requirements to support their business transactions. Today Lanham EDI modules operate across all of these standards, and provide the requested labels whether they are GS1-128 (UCC-128), AIAG, or other custom package or item formatted labels.

EDI Focus Areas

Several industries have specific requirements for their unique needs that are also supported by Lanham EDI.

Retail Compliance – Total retail compliance, required by large retail chains, is accomplished by using Lanham EDI in conjunction with E-Ship.

Automotive – Lanham EDI handles the receipt of a forecast, release against the forecast, and the processing of cumulative totals, typically required by manufacturers delivering product to an automotive assembly line.

EDI Focus Areas (Continued)

Fashion – The bulk draw-down process is supported for the fashion industry, allowing orders to be associated with blanket orders representing the total season commitment by a customer.

Food – Lanham EDI supports UCS standard documents.

Third Party Logistics – Lanham EDI supports 3PL shipping and receiving documents, including ASNs.

The Lanham EDI Approach

Lanham EDI is unique in that it includes a logical mapping tool, built inside Microsoft Dynamics NAV, to allow the seamless mapping of EDI transactions within the business system.

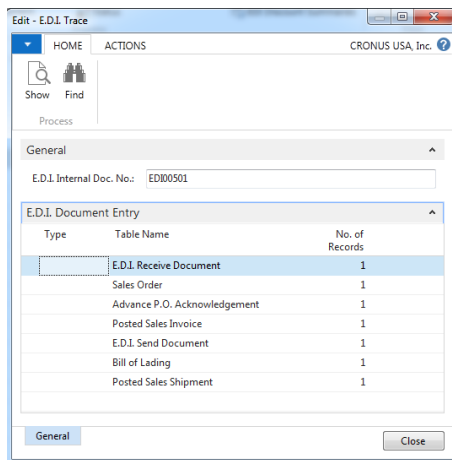
Perhaps the most important part of an EDI solution is the integration with your internal business processes, yet many companies use a number of software packages, often not integrated, to try to accomplish this task.

Historically, EDI translations have been handled outside the business system, leaving the final linkage into the business system database to programmers, hard-coded programs, or even manual entry.

Lanham EDI takes a more efficient approach by incorporating the mapping and cross-reference process inside NAV. This provides a single mapping process between the EDI documents and the business system database; a consistent user interface; NAV native drill-down, from either a NAV business document or an EDI document, to the related transaction detail; and a logical place for EDI archives.

Total Access to Data

The EDI Trace window shows an example of all transactions that were created by and associated with an incoming 850 purchase order. The user can then drill down to view any document or transaction.



Alerts

Lanham EDI alerts enable the user to display selected alerts when a specified alert-action occurs. Each EDI alert contains a text description of the alert action, and an EDI trace or NAV drill down allows the user to review the related transaction detail associated to each EDI alert.

Cross-Reference Engine

Often the most difficult part of the EDI translation process is the cross-referencing of incoming data to the business system data. For example, a trading partner typically orders an inventory item using one of several numbers, none of which may be the number you use to identify that item in your system.

Because Lanham EDI is built inside Dynamics NAV, it handles the cross-referencing and mapping in a single step inside your business system.

Lanham EDI handles cross-referencing of:

- Items
- Units of Measure
- Status Codes
- Vendor
- Sell-To/Ship-To/Ship-For/Distribution Centers

Additionally, Lanham offers general cross-references for both inbound and outbound data such as:

- Shipping Agent
- Payment Terms
- Shipping Payment Type
- Tax Areas & Tax Jurisdiction Detail
- G/L Account Number
- Many More

EDI and Shipping Combined

Lanham EDI and E-Ship, both built inside NAV, take a unique approach of embedding all these functions inside a single system, providing a seamless flow for data, and simple, automatic generation of Advanced Shipment Notices (ASNs).

From the incoming EDI order to shipment, ASN, and invoice, the user has their familiar common user interface and access to all the details that make up the day-to-day and shipping operations.

- All modules and functions are embedded into a single supply chain system, providing a native and automatic flow of shipping data.
- Pack Line Scanning and standard pack automatically capture package-level detail for the ASN.
- Bill of Lading (BOL) for planning and executing shipments.
- Label Formatter for GS1-128 (UCC-128) and AIAG

The Lanham VAN

The Lanham VAN is one of many options Lanham EDI provides that should be considered when exploring your Total Cost of Ownership (TCO).

Lanham believes it is important to explore the best, least-costly methods to achieve compliance with your trading partners, and to understand your options relative to your TCO.

There are times when a direct-connect AS2 connection represents the lowest cost way of attaining compliance, and in these cases, Lanham will recommend that you consider the one-time fees associated with implementing AS2 so that you will not have to absorb ongoing monthly transaction fees to handle ongoing communications with your trading partner.

Complementing your solution, the Lanham VAN is also available for transmitting EDI documents, when required by your trading partner. We offer some of the lowest transaction rates in the industry, and will help you minimize your EDI costs.

The Lanham VAN handles all types of transactions, and even if a specific brand VAN is required by your trading partner, the Lanham VAN offers specific VAN interconnects to deliver your documents, with lower fees, to other VANs for final delivery to the trading partner. The Lanham VAN enables you to handle all of your EDI needs in one place.

Lanham VAN Deliverables

The Lanham VAN provides users with the following deliverables:

- Intuitive Document Tracking and Analytics
- Access to GXS Trading Grid Online
- Ability to create your own trade partner relationships
- Option for Lanham to create your trade partner relationships
- Extensive video user training and documentation
- Carbon-Copy and Auto-Forward self setup
- Search, Transaction Summary and Interconnect Status reports
- Dashboard visibility to inbound and outbound files

Contact us for a quote. It is important to understand your TCO, to be sure that you are taking the least-costly approach to effective EDI compliance.

Configuration

The following modules can be licensed from Microsoft through your Lanham reseller:

Module Description	Module Number
EDI Standard *Required	14000360
EDI Extended Doc. Handling	14000380
EDI Extended 3PL Doc. Handling *Requires SEO.55.XX or higher	14000425
EDI Extended Purchase Doc. Handling *Requires SEO.55.XX or higher	14000430
EDI Extended 2 Doc. Handling *Requires SEO.55.XX or higher	14000435
E-Ship Packing	14000710
E-Ship BOL/ASN – Advanced Ship Notice *Requires E-Ship Packing	14000780
E-Ship Label Formatter *Requires E-Ship Packing	14000790
E-Ship Extended Label Formatter *Requires E-Ship Packing	14000860

Related Fact Sheets

- E-Ship
- Inbound Container Tracking
- POS Data Analytics

Additional Supply Chain Fact Sheets

To learn more about Lanham's entire suite of Supply Chain software, reference the following fact sheets:

- Demand Planning for Distributors
- Demand Planning for Manufacturers
- E-Ship
- E-Receive
- Address Verification
- ACE Warehousing
- Outbound Warehouse Request
- History Management

About the Developer

Lanham Associates® provides supply chain business value to middle market distributors and manufacturers by streamlining operations, cutting costs, and increasing overall productivity.

Specialists in distribution and Microsoft Dynamics NAV right from the start, Lanham prides itself in creating and implementing quality software and services that improve customers' business processes. With Lanham solutions you can also count on staying current since Lanham stays in lockstep with Microsoft on the latest technology offerings.

Uniquely, Lanham solutions allow users to keep all of their data right at their fingertips in NAV. No tedious customizations or integrations with external sources. No new user interfaces to learn. All the drill-down and reporting capabilities of NAV, and all your key data inside *your* business system. It's seamless simplicity at its best, and it's reflected in all of Lanham's offerings.

Contact Information

Lanham Associates, Headquarters

1 Meca Way
Norcross, GA 30093 USA
Phone: +1-678-379-4200
From Europe: +31 (0)10 7994145

Email: LAInfo@lanhamassoc.com

Lanham Associates: Your Single Source for Supply Chain Solutions.

Additional Resources

Lanham Services®

Lanham Services can be the perfect complement to your Lanham solutions.

The Lanham Services team is expert in delivering business process reengineering, implementations, training, upgrades, custom work, EDI managed services, support and project work across all the Lanham supply chain solutions.

Lanham Services Contact Information:

Phone: +1 928-846-4909

Email: LSInfo@lanhamservices.com

Absolute Value™

Through its sister company, Absolute Value, LLC, Lanham also offers key ERP-independent cloud solutions: **Demand Planning** and **Point of Sale (POS) Data Analytics**.

Demand Planning enables distributors and manufacturers to have the right inventory at the right place at the right time, while reducing inventory investment and increasing customer service levels.

POS Data Analytics analyzes retailers' weekly store/item information to provide companies that supply to retailers with guidance that can help them improve product sales and trading partner relationships.

For more information on Absolute Value, contact:

Phone: 678-905-1204, ext 102

E-Mail: AVInfo@absolutevalue-us.com

Please visit: www.lanhamassoc.com or www.absolutevalue-us.com for additional product information.