



### E-Receive

E-Receive provides a streamlined workflow for the inbound receiving process by adding barcode scanning support to your warehouse receiving area. The E-Receive module is completely embedded within Microsoft® Dynamics™ NAV, so it automatically updates business system functions such as receipts against purchase orders and inventory.

Using E-Receive, warehouse employees scan barcode-labeled items or cases, allowing for rapid and accurate inventory updates inside of their business system.

| Type | No.   | Description | Quantity | Unit of Mea... |
|------|-------|-------------|----------|----------------|
| Item | 74002 | Top Panel   | 6        | PCS            |
| Item | 74001 | Base        | 6        | PCS            |
| Item | 74003 | Rear Panel  | 6        | PCS            |

### Inbound Documents

E-Receive supports all inbound documents including purchase orders, sales returns, transfers, purchase invoices, and sales credit memos.

### Item Cross References

E-Receive enables users to create cross-references for goods when appropriate, when the vendor changes the barcode, or when a new unit of measure is added. The item cross-reference table is updated in real time.

### Over-Receiving Capabilities

E-Receive enables over-receive capabilities, while reducing the administration time required when receiving. Enabling the quickest possible put-away time, it records the fact that there is an over-receipt, and provides the user with information if other relevant documents for the same item exist.

### Capturing Product Data

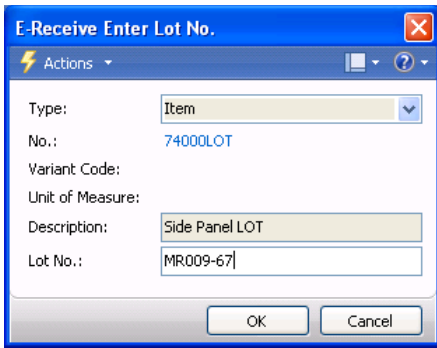
E-Receive enables the user to update the item information as needed during the receiving process, providing the ultimate update process where it is most effective. When interfaced with a scale, precise gross weight can be captured automatically (scales interface module may be required).

### When Used in Combination with Label Formatter Barcode Labeling

E-Receive provides barcode labeling at the receiving point. Enjoy increased performance, avoiding delays in picking and shipping when time is short, by barcode labeling each new item or palette as it is received.

### Lot and Serial Number Tracking

Lot and serial number records can be created when E-Receive is used with Dynamics NAV item tracking. The lot/serial number can be embedded in the barcode that is printed during the receiving process. See an example of this on the reverse side.



## Module Information

| Module Description            | Module Number |
|-------------------------------|---------------|
| <b>E-Receive</b><br>*Required | 14000850      |
| <b>Scales Interface</b>       | 14000720      |
| <b>Label Formatter</b>        | 14000790      |

## Hardware Requirements

- Honeywell 1452G or like handheld device
- Electronic scales using RS232 or USB interface, Mettler Toledo BC60 or similar
- Barcode printer: Supports (not emulates) EPL or ZPL language with 200dpi
- Computer workstation: Minimum 1 GB Memory, RS232 serial or USB port for scales interface, Windows 7.0 or newer

Detailed hardware configuration options change frequently, and can be obtained through national Lanham Partner, Barcom, Inc. Find more at <https://www.barcominc.com/eshipreceive>.

## Related Fact Sheets

To learn more about Lanham's entire suite of Supply Chain software reference the following fact sheets:

- Demand Planning for Distributors
- Demand Planning for Manufacturers
- E-Ship
- Lanham EDI
- Inbound Container Tracking
- Address Verification
- ACE Warehousing
- Outbound Warehouse Request
- History Management

## About the Developer

Lanham Associates® provides supply chain business value to middle market distributors and manufacturers by streamlining operations, cutting costs, and increasing overall productivity.

## About the Developer (Continued)

Specialists in distribution and Microsoft Dynamics NAV right from the start, Lanham prides itself in creating and implementing quality software and services that improve customers' business processes. With Lanham solutions you can also count on staying current since Lanham stays in lockstep with Microsoft on the latest technology offerings.

Uniquely, Lanham solutions allow users to keep all of their data right at their fingertips in NAV. No tedious customizations or integrations with external sources. No new user interfaces to learn. All the drill-down and reporting capabilities of NAV, and all your key data inside your business system. It's seamless simplicity at its best, and it's reflected in all of Lanham's offerings.

## Contact Information

### Lanham Associates, Headquarters

1 Meca Way  
Norcross, GA 30093 USA  
Phone: +1-678-379-4200

From Europe: +31 (0)10 7994145

Email: [LAInfo@lanhamassoc.com](mailto:LAInfo@lanhamassoc.com)

## Additional Resources

### Lanham Services®

Lanham Services can be the perfect complement to your Lanham solutions as they are expert in delivering business process reengineering, implementations, training, upgrades, custom work, EDI managed services, support and project work across all the Lanham supply chain solutions.

### Lanham Services Contact Information:

Phone: +1 928-846-4909

Email: [LSInfo@lanhamservices.com](mailto:LSInfo@lanhamservices.com)

## Absolute Value™

Through its sister company, Absolute Value, LLC, Lanham also offers key ERP-independent cloud solutions: **Demand Planning and Point of Sale (POS) Data Analytics.**

Demand Planning enables distributors and manufacturers to have the right inventory at the right place at the right time, while reducing inventory investment and increasing customer service levels.

POS Data Analytics analyzes retailers' weekly store/item information to provide companies that supply to retailers with guidance that can help them improve product sales and trading partner relationships.

For more information on Absolute Value, contact:

Phone: 678-905-1204, ext 102

E-Mail: [AVInfo@absolutevalue-us.com](mailto:AVInfo@absolutevalue-us.com)

Please visit: [www.lanhamassoc.com](http://www.lanhamassoc.com) or [www.absolutevalue-us.com](http://www.absolutevalue-us.com) for additional product information.

## Lanham Associates: Your Single Source for Supply Chain Solutions