

E-SHIP



E-SHIP – Shipping Manifest System

Using E-Ship, built inside Microsoft® Dynamics NAV, you can reduce cost while increasing both efficiency and accuracy.

Key Benefits:

- Capture package level detail using Pack Line Scanning.
- Increase shipping accuracy by scanning items and comparing them to the sales order or picking document.
- Capture serial numbers and lot numbers at packing time.
- Automatically create packing lists by package and order.
- Print custom labels and UCC128 labels while handling the package.
- Automatically send a detailed E-Mail with tracking numbers and package contents to the customer at time of shipment.
- Track packages and shipments from within the business system.
- Reconcile freight invoices.
- Integrate with EDI and Bill of Lading to generate Advanced Shipment Notices (ASN).

Built Inside Microsoft Dynamics NAV

By having E-Ship embedded in NAV, the user experiences unprecedented functionality and access to data. E-ship is available to plan and execute shipping from the time of sales order through shipping manifest.

Detailed information in this segment of the system can be accessed via the standard drill down capability found throughout Dynamics NAV. Changes made to a customer's address are made on the system's customer card where they will be available to all other parts of the system as well.

Shipping Accuracy

Pack Line Scanning can drive your shipping accuracy to new levels. E-Ship users will tell you that their accuracy approaches 100%. Not only do they know that they shipped the correct items in multiple packages, but they know which items are in each package and the tracking number of the package. In addition, the weight of each package substantiates that the quantity the customer ordered is actually shipped.

E-Ship uses the Dynamics NAV unit of measure functionality to convert and pack multiple units of measure for a single item. Typically this is utilized when a single item contains different barcodes based on its unit of measure.

When packing of a sales order is completed, the user is notified if the packed quantity is not equal to the quantity that was to be shipped. For backordered shipments, E-Ship has the ability to automatically update the sales order with the packed quantity.

An added benefit of package level detail is the ability to print a summarized packing list for the last package in a group, which shows the contents of each package and the associated tracking number. This information can also be automatically sent via e-mail to the customer with CC and BCC addresses included as needed. This is extremely helpful when drop shipping product to a client's end customer.

EDI and ASN Integration

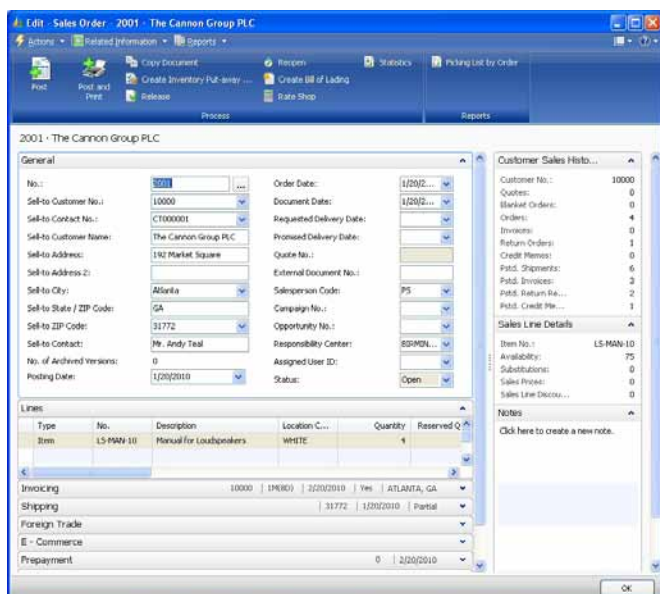
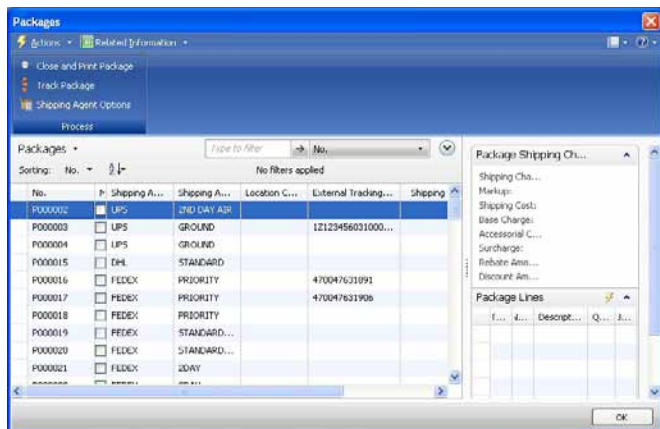
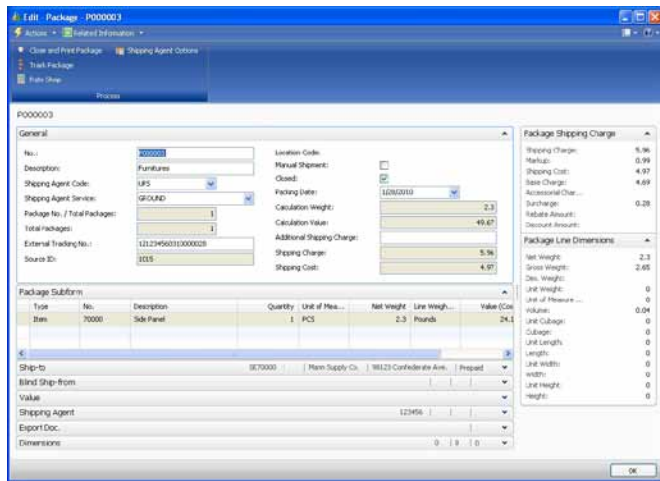
Because E-Ship captures Package Level Detail, there is no need to re-key data or transfer information from system to system to prepare and send the Advanced Shipment Notice. ASNs can be automatically sent when the Bill of Lading is closed.

Multi-Point Shipping Requirements

Today many companies operate multiple warehouses and shipping points, but have a strong need to operate from a consolidated ERP system. If your company has these types of requirements, E-Ship and Dynamics NAV offer an excellent solution. Using a centralized database, with a Citrix server and terminals deployed in each warehouse, it is just as easy to ship a single sales order from the Netherlands as it is from Germany. In fact, E-Ship can ship that single sales order from multiple warehouses with separate or consolidated invoicing.

E-Ship Package Detail

Below you can see a sales order being shipped by UPS in two packages. Notice shipping charges on the sales order.



Available E-Ship Modules

Packing – captures package level detail using a wedge scanner attached to a computer workstation. This unique packing operation allows the user to execute the entire packing and shipping operation with the scanner.

- **Standard Pack** – provides the ability to easily pack many standard packages, such as cases, without scanning and weighing each package. This feature is often used to meet package shipping and labeling retail compliance requirements.
- **Fast Pack** – provides an alternative to the scanning interface by allowing a shipper to choose the item being packed from a list.

Scales Interface – interfaces with various electronic scales during the packing process. Check the web site, www.lanhamassoc.com, for a list of recommended scales.

Bill Of Lading/ASN – provides shipment planning, rating, and printed Bills of Lading (BOL). The Bill of Lading is also used to consolidate information for the Advanced Shipment Notice (ASN) for EDI.

Label Formatter – provides the ability to format customized labels, and assign them to shipping agents, customers, or ship-to addresses.

Rate Shopping – provides the ability to estimate and quote shipping rates at the sales order or Bill of Lading level.

Freight Invoice Reconciliation – can be used to manually compare shipping charges to freight invoices. This module is typically used to reduce surcharges due to invalid shipping criteria such as addresses, accessorial charges, etc.

Label Formatter Extended Features – adds the ability to do 2D barcodes and encode RFID tags.

E-Mail – provides the ability to map customized e-mail formats and assign them to customers or ship-to addresses. Allows you to send shipping information and package details via e-mail.

Software Requirements

- NAV OCX support required if utilizing MAPI e-mail interface in pre NAV 2009 environment.
- Dynamics NAV client running under Windows 2000 or newer.
- Internet connection required on all shipping stations.

Hardware Requirements

- Symbol model LS 4208 or equivalent.
- Electronic Scales using RS232 interface, Mettler Toledo PS60 or similar (Check currently supported models at www.lanhamassoc.com).
- Eltron or Zebra barcode printer capable of printing at least 4" X 6" labels.
- Computer workstation, 1 GHZ processor, RS232 serial port, parallel printer port, and hard-wired network connection.

Related Fact Sheets

To learn more details about the suite of products available from Lanham Associates, you may reference the following fact sheets:

- EDI
- E-Receive
- Advanced Forecasting & Procurement – AFP for Distribution
- AFP for Manufacturing
- ADCS Warehousing
- Outbound Warehouse Request
- History & Security Management

About the Developer

Lanham Associates® began its relationship with Navision Software in 1997 by creating the product's first distribution functionality, Advanced Distribution. A Gold-Certified Microsoft Dynamics ISV (Independent Software Vendor), Lanham Associates has been creating complementary supply chain planning and execution products inside Dynamics NAV ever since.

Current products include ACE – Advanced Commerce ERP – for Automotive, CPG, Electronics, and Sporting Goods; EDI; E-Ship; E-Receive; AFP – Advanced Forecasting and Procurement; ADCS Warehousing; Outbound Warehouse Request; and History & Security Management.

Lanham Associates maintains high standards for product excellence, and has been the recipient of both the President's Club and Inner Circle Awards many times since being affiliated with Microsoft.

Contact Information

For more information contact your local Lanham reseller or contact us at:

Lanham Associates, Headquarters

1 Meca Way
Norcross, GA 30093 USA
Voice: +1-678-379-4200, ext 105
E-Mail: LAInfo@lanhamassoc.com

Lanham Associates, EMEA

Bedrijvenpark Twente 305
7602 KL Almelo, Netherlands
Voice: +31 (0)10 7994145
E-Mail: LAInfo@lanhamassoc.com

More information is available on this and other products at www.lanhamassoc.com.