

EDI



EDI Your Way

EDI is a given in today's world. There are so many aspects of implementing EDI that are outlined for you by trading partners. With the Lanham EDI solution, it can be simple, you can meet trading partner specifications, and you can have it your way, too.

Choose from several EDI implementation options and mix and match as you like:

Key Benefits:

- Use Lanham EDI natively inside your Microsoft® Dynamics™ NAV ERP solution for maximum visibility, efficiency, and control.
- Use Lanham EDI when working with a 3PL warehouse.
- Use Lanham EDI on a SaaS (Software as a Service) monthly basis.
- Use Lanham training to enable your freedom to do your own mapping and control your own data and destiny.
- Have Lanham or your Lanham Partner get you started in EDI with on-site assistance for mapping, cross references, testing, and go live.
- Let Lanham outsource your total EDI solution for you.
- Take advantage of the Lanham EasyLink low-cost VAN solution.

EDI Standards

The Lanham EDI product fully supports the X12, automotive, UCS, and EDIFACT standards. In fact, multiple standards are often supported within a single transmission to or from a Value Added Network (VAN).

In addition to these standards, each industry has added their own specific requirements to support their business transactions. Today the Lanham EDI granules are operating across all of these standards, and provide the requisite labels whether they are UCC 128, AIAG, or other custom formatted labels.

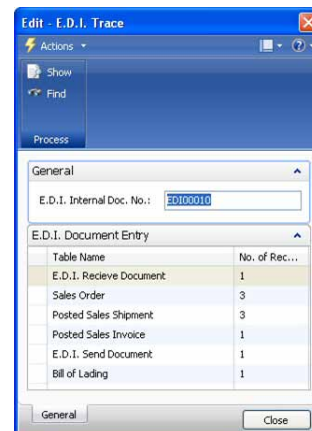
The Lanham EDI Approach

Lanham EDI is unique in that it includes a logical mapping tool, built inside Microsoft Dynamics NAV, to allow the seamless mapping of EDI transactions within the business system.

Perhaps the most important part of an EDI solution is the integration with your internal business processes, yet many companies use a number of software packages, often not integrated, to try to accomplish this task.

Historically, EDI translation has been handled outside the business system, leaving the final linkage into the business system database to programmers, hard-coded programs, or even manual entry.

The Lanham EDI product takes a more efficient approach by incorporating the mapping and cross-reference process inside NAV. This provides a single mapping process between the EDI documents and the business system database, a consistent user interface, NAV native drill down from either a business document or an EDI document to the related transaction detail, and a logical place for EDI archives.



Total Access to Data

The EDI Trace window shows an example of all transactions that were created by and associated with an incoming 850 Purchase Order. The user can then drill down to view any document or transaction.

Alerts

EDI Alerts enable the user to display selected alerts when a specified alert action occurs. Each EDI Alert contains a text description of the alert action; EDI Trace or NAV Native drill down allows the review of related transaction detail associated to each EDI Alert.

Combine EDI and E-Ship

EDI and E-Ship, both built inside NAV, take a unique approach of embedding all these functions inside a single system, providing a native flow for data, and simple, automatic generation of ASNs.

From the incoming EDI Order to shipment, Advanced Shipment Notice (ASN), and invoice, the user has a common user interface and access to all the details that make up the day-to-day and shipping operations.

- All modules and functions embedded into a single Supply Chain system, providing a native and automatic flow of shipping data.
- Pack Line Scanning and Standard Pack automatically capture package level detail for the Advanced Shipment Notice (ASN).
- Bill of Lading for planning and executing shipments.
- Label Formatter for UCC and AIAG compliance labels and other custom formatted labels.

Cross-Reference Engine

Often the most difficult part of the EDI translation process is the cross-referencing of incoming data to the business system data. For example, a trading partner typically orders an inventory item using one of several numbers, none of which may be the number you use to identify that item in your system.

Because the EDI product is built inside Dynamics NAV, it handles the cross-referencing and mapping in a single step inside your business system.

The Lanham EDI product handles cross-referencing of:

- Items
- Units of Measure
- Sell-To
- Ship-To
- Ship-For
- Distribution Centers

Additionally, Lanham offers General Cross References:

- Shipping Agent
- Payment Terms
- Shipping Payment Type
- More

Specific EDI Requirements

Several industries have specific requirements for their unique needs that are also supported by the Lanham EDI product.

Retail Compliance – Total retail compliance, required by large Retail Chains, is accomplished by using the Lanham EDI product in conjunction with E-Ship.

Automotive – Lanham's EDI product handles the receipt of a forecast, release against the forecast, and the processing of cumulative totals, typically required by manufacturers delivering product to an automotive assembly line.

Fashion – The Bulk Draw Down process is supported for the fashion industry, allowing orders to be associated with blanket orders representing the total season commitment by a customer.

Food – Lanham's EDI supports UCS standard documents.

Third Party Logistics – Support for 3PL shipping and receiving documents, including ASNs.

Respond Quickly to Changing Requirements

Whether setting up a new trading partner or responding to changes with an existing one, the EDI product gives you the tools to quickly and efficiently comply with your customer's or vendor's changing requirements.

Increased Customer Satisfaction

With superior visibility to real-time information, EDI provides you with the tools necessary to automate and streamline your business processes, which enables you to respond to your customer demands on the fly and with accurate information.

Complex Document Support

Lanham EDI, serving Dynamics NAV customers in EDI since 1997, is the most experienced EDI solution for NAV. As such, it supports a wide range of the most complex EDI documents. If you are wondering, please feel free to check with us as these documents change with trading partner requirement updates.

Key Lanham EDI Benefits:

- Lanham EDI is totally built inside Microsoft Dynamics NAV, providing the users unprecedented access to any data, documents or transactions.
- Lanham's EDI product supports the X12, Automotive, EDIFACT standards, and multiple file formats.
- EDI documents are held in their normal NAV location (ex: invoices with invoices) as well as in an EDI electronic file cabinet for easy access and review.
- EDI Alerts enable the user to display selected alerts when a specified alter action occurs.
- Lanham EDI combines handling the cross referencing of incoming data to the business system data and mapping in one step.
- Standard Cross References Include:
 - Items
 - Units of Measure
 - Sell-To
 - Ship-To
 - Ship-For
 - Distribution Centers
- General Cross References Include:
 - Shipping Agent
 - Payment Terms
 - Shipping Payment Type
 - Shipment Method Code
 - Tax Area Code
 - And others
- EDI documents are kept in specific archives for easy reference and retrieval.
- Native and simple creation of ASNs via embedded application with E-Ship.
- Supports label creation of UCC 128, AIAG, and custom labels.
- Handles 3PL EDI documents and shipments.
- Full Service VAN (Value Added Network) available.
- Respond to customer demands on the fly with accurate information.
- Quickly and efficiently comply with your customer's or vendor's changing requirements.

Lanham EasyLink VAN

Lanham Associates and EasyLink Services International have joined up to bring together two robust, established technologies, forming the most comprehensive Dynamics NAV compliance offering available today.

EasyLink is one of today's top 3 EDI VANs (Valued Added Networks). For over 20 years, EasyLink has delivered a reliable, secure and fully redundant global infrastructure that manages millions of transactions daily.

Lanham Associates provides supply chain excellence through our EDI solution, embedded in Dynamics NAV.

With Lanham EasyLink, we will help you explore your TCO (Total Cost of Ownership), and will work to minimize your EDI costs.

When it makes sense, Lanham EDI enables you to use a simple communications software to trade directly with EDI partners, saving ongoing monthly VAN fees.

Because we also offer a VAN at very reduced rates, you can be assured that you can select the least costly approach to attaining your EDI goals. Contact Lanham Associates or your Lanham partner for a quote. It can't hurt to understand your TCO, and be sure that you are taking the least costly approach to your EDI compliance.

Lanham EasyLink Deliverables

- 21 EDI Reports that can be saved in 6 formats
- Web Visibility Tool (Read or Write Access)
- 31 Day Online Archives
- Data Restores to Partners
- Data Restores to your Host System
- Open FTP File Transport
- Visibility to Flat Files and X12 data
- Automated Alerts via Email (Proactive and Reactive)
- Rules-Based Processing Options
- Carbon Copy and Auto Forward Self-Setup

Configuration

The following modules can be licensed from Microsoft through your Lanham reseller:

Module Description	Module Number
EDI Standard *Required	14000360
EDI Extended Doc. Handling	14000380
EDI Extended 3PL Doc. Handling *Requires SEO.55.XX	14000425
EDI Extended Purchase Doc. Handling *Requires SEO.55.XX	14000430
EDI Lanham Mapping Services Basic	14000910

Related Fact Sheets

- E-Ship
- E-Receive
- AFP – Advanced Forecasting & Procurement for Distribution
- AFP for Manufacturing
- CPG ACE
- Electronics ACE
- Sporting Goods ACE
- Automotive ACE
- ADCS Warehousing

Additional Assistance

Your Lanham Partner or Lanham Associates® will be glad to assist you with additional information on training, mapping, implementation, trading partner testing, or any other facet of EDI.

Always feel free to reach out for further assistance, whether you are adding a trading partner, working to remain compliant with a current trading partner, or responding to correspondence from a trading partner.

A Lanham resource, partner or Lanham consultant will be glad to consider your environment and advise you as to the most efficient and effective way, at the lowest cost, to address your EDI needs.

About the Developer

Lanham Associates® began its relationship with Navision Software in 1997 by creating the product's first distribution functionality, Advanced Distribution. A Gold-Certified Microsoft Dynamics ISV (Independent Software Vendor), Lanham Associates has been creating complementary supply chain planning and execution products inside Dynamics NAV ever since.

Current products include ACE – Advanced Commerce ERP – for Automotive, CPG, Electronics, and Sporting Goods; EDI; E-Ship; E-Receive; Address Validation; AFP – Advanced Forecasting and Procurement; ADCS Warehousing; Outbound Warehouse Request; Credit Card Processing; and History & Security Management.

Lanham also provides Absolute Value, a world class, formula-based forecasting and multi-site replenishment solution for distributors, allowing them to increase profits while concurrently improving customer satisfaction with unprecedented visibility. The product is available in a SaaS or on-premise format, and can be used with any Microsoft® Dynamics™ or independent ERP system.

Lanham Associates maintains high standards for product excellence, and has been the recipient of both the President's Club and Inner Circle Awards many times since being affiliated with Microsoft.

Contact Information

For more information contact your local Lanham reseller or contact us at:

Lanham Associates, Headquarters

1 Meca Way
Norcross, GA 30093 USA
Voice: +1-678-379-4200, ext 105
E-Mail: LAInfo@lanhamassoc.com

Lanham Associates, EMEA

Bedrijvenpark Twente 305
7602 KL Almelo, Netherlands
Voice: +31 (0)10 7994145
E-Mail: LAInfo@lanhamassoc.com

More information is available on this and other products at www.lanhamassoc.com or www.absolutevalue-us.com.